

## Panel Builder 3 B58 - Instrument Reference

---

### Annunciator Ap B58



Displays Autopilot Status Information

---

### Delce Pres sB58



Displays the pressure of the de-icing system in PSI

---

### Prop Amps B58



Displays the amps of the prop de-icing heater

---

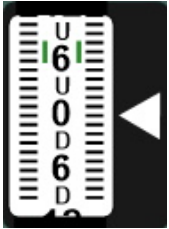
### Suction B58



Displays Vacuum for Instruments

---

### Trim Indicator Elevator for B58



Shows if the status of the Elevator Trim

---

### Audio Panel B58



Controls which radio to send/receive and listen to

---

### Cylinder Head Temp and Exhaust Gas Temp



Displays the Cylinder Head Temp (Deg C) and Exhaust Gas Temp (Deg C) for the configured Engine

---

### Fuel Flow for Engine (configurable)



Displays the Fuel Flow in Gal/Hr for the configured Engine

---

### Manifold Pressure for Engine (configurable)



Displays the Manifold Pressure in in/hg for the configured Engine

---

## Panel Builder 3 B58 - Instrument Reference



### Oil Temp & Press for Engine (configurable)

Displays the Oil Temperature (Deg C) and Pressure (PSI) for the configured Engine



### Propeller Rpm for Engine (configurable)

Displays the Propeller Rpm for the configured Engine



### Fuel Quantity Left or Right (Configurable)

Displays the fuel qty for the fuel tank

## Auto Pilot B58



Controls the AutoPilot

## DME Collins



Displays the speed, Distance and time to the tuned NAV1 or NAV2 Station

## Horizontal Situation Indicator B58



Displays the current heading with bug for autopilot and Course/Glideslope Information for VOR/GPS

## RMI B58 Version



Displays the current heading and the direction of the tuned NDB and VOR1/2

## Airspeed Indicator with speed ranges



Displays airspeed in knots

## Altimeter with Barometric Pressure adjustment

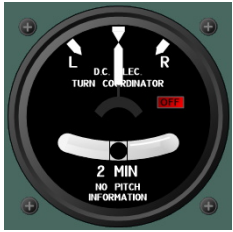


Displays altitude in feet



**Artificial Horizon B58**

Displays attitude of aircraft



**Turn Rate and Slip Indicator B58**

Displays the turn rate in deg/min and if the aircraft slips (is uncoordinated).



**Vertical Speed Indicator B58**

Displays the rate at which the aircraft climbs or descends in feet/minute