

Annunciator Square (Configurable)



Displays various system information

Annunciator Square Autopilot(Configurable)



Displays various Autopilot information

Annunciator Square Engine (Configurable)



Displays various system information from engine data

Annunciator Square Fuel (Configurable)



Displays various system information from fuel data



Cabin Altimeter

Displays cabin altitude in feet



Vertical Speed Indicator for cabin

Displays vertical speed in ft/min for cabin



Chronometer

Displays Local & Zulu Time and provides a timer.



Flaps Indicator

Shows the status of the Flaps



Gear Status Indicator

Displays the status of the Landing Gear

Outside Temperature



Displays the outside temperature in Deg C or Deg F

Prop Amps



Displays the amps of the prop de-icing heater

Prop Sync



Shows if both props rotate in sync (same RPM) with each other

Suction Gauge



Displays Vacuum for Instruments

Radio ADF Collins



Sets the frequencies of the ADF Radio

Radio Com Collins (configurable)



Sets the frequencies of the Com Radio

Radio Nav Collins (configurable)



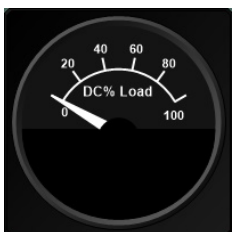
Sets the frequencies of the Nav Radio

Transponder Collins



Sets the Transponder

Bus Load Percent



Displays the electrical load of the configured bus in percent



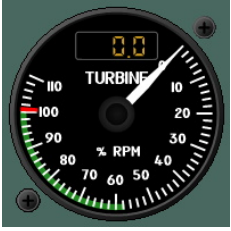
Bus Volts

Displays the volts of the configured bus



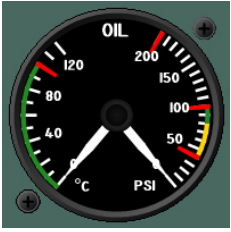
Inter Turbine Temperature

Displays the inter turbine temperature of the configured engine



Low Pressure Core RPM

Displays the low pressure core RPM of the configured turbine engine in percent



Oil Temp & Press

Displays the Oil Temperature (Deg C) and Pressure (PSI) for the configured engine



Rpm for Propeller

Displays the Propeller Rpm for the configured Engine



Engine Torque

Displays the torque of the configured engine



Fuel Flow

Displays the fuel flow in lbs/hr for the configured engine



Fuel Tank Quantity (Pounds)

Displays the total fuel qty or the nacelle tank qty

Distance Measuring Equipment



Displays the Speed, Distance and Time to the tuned NAV1 or NAV2 Station



Horizontal Situation Indicator

Displays the current heading with bug for autopilot and Course/Glideslope Information for VOR/GPS



Horizontal Situation Indicator

Displays the current heading with Bug for Autopilot and Course Information for VOR/GPS



RMI Collins

Displays the current heading and the direction of the tuned VOR1/ADF and VOR2/ADF (Left Right Button)



Airspeed Indicator for C90

Displays airspeed in knots with never exceed needle (variable)



Altimeter with Barometric Pressure adjustment

Displays altitude in feet



Artificial Horizon

Displays attitude of aircraft



Turn Rate and Slip Indicator

Displays the turn rate in deg/min and if the aircraft slips (is uncoordinated).



Vertical Speed Indicator

Displays the rate at which the aircraft climbs or descends in feet/minute