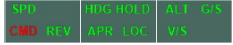


Annunciator Auto Pilot Advanced EFIS

Displays the status of the Auto Pilot (Advanced)



Annunciator Auto Pilot EFIS

Displays the status of the Auto Pilot (GA aircraft)



Clock EFIS

Displays local and zulu time



Flaps Indicator EFIS

Displays the state of the flaps



Gear Indicator EFIS

Displays the state of the landing gear



Outside Temp EFIS

Displays the outside temperature in Deg F and Deg C



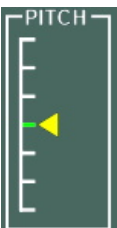
Spoiler Indicator EFIS

Displays the state of the spoilers/airbrakes



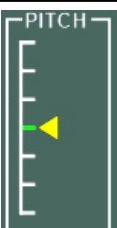
Trim Pitch EFIS

Displays the status of the Pitch (Elevator) Trim



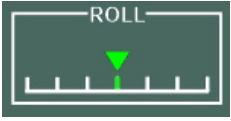
Trim Pitch Reverse EFIS

Displays the status of the Pitch (Elevator) Trim (reversed display)



Panel Builder 3 - EFIS

Trim Roll EFIS



Displays the status of the Roll (Aileron) Trim

Trim Yaw EFIS



Displays the status of the Yaw (Rudder) Trim



Wind EFIS

Displays windspeed and direction



Radio EFIS

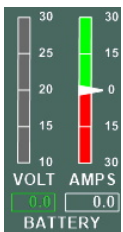
Radio for COMM/NAV/ADF/XPNDER

Radio Label EFIS (configurable)



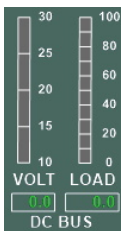
Displays data of the configured radio

Battery EFIS



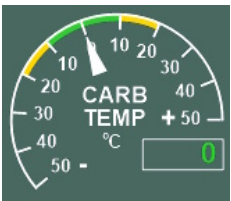
Displays the Voltage and Load of the configured battery

Bus EFIS



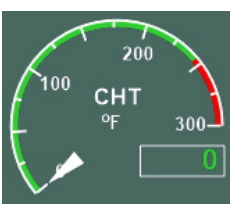
Displays the Voltage and Load (%) of the configured bus

Carburator Temperature EFIS



Displays the Carburator Temperature of the configured engine in Deg C

Cylinder Head Temp EFIS



Displays the cylinder head temperature of the configured engine in Deg F or Deg C

Panel Builder 3 - EFIS



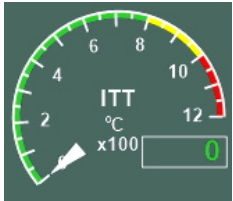
EGT EFIS

Displays the exhaust gas temperature of the configured engine in Deg F or Deg C



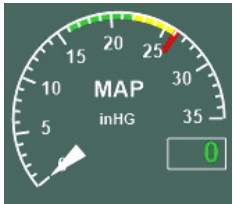
EPR EFIS

Displays the Engine Pressure Ratio of the configured engine



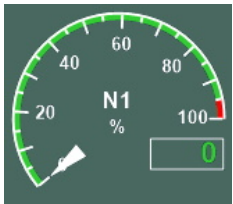
Interstage Turbine Temperature EFIS

Displays the Interstage Turbine Temperature of the configured engine in Deg C



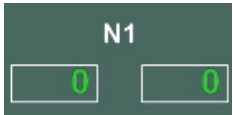
Manifold Pressure EFIS

Displays the manifold pressure of the configured engine in inHg



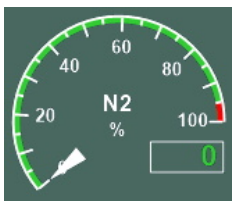
N1 EFIS

Displays the N1 of the configured engine in percent



N1 Label EFIS

Displays the N1 of the configured engine(s) in percent



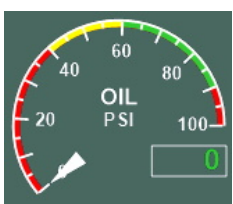
N2 EFIS

Displays the N2 of the configured engine in percent



N2 Label EFIS

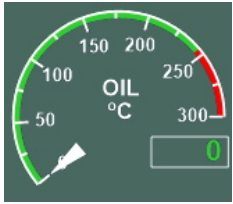
Displays the N2 of the configured engine(s) in percent



Oil Pressure EFIS

Displays the oil pressure of the configured engine in PSI

Panel Builder 3 - EFIS



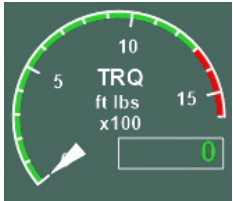
Oil Temp EFIS

Displays the oil temperature of the configured engine in Deg F or Deg C



RPM EFIS

Displays the rpm of the configured engine or propeller



Torque EFIS

Displays the torque of the configured engine



Fuel Flow EFIS

Displays the Fuel Flow of the configured engine in Gallons/h, kg/h or lbs/h



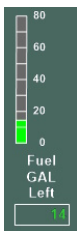
Fuel Flow Label EFIS

Displays the Fuel Flow of the configured engine(s) in Gallons/h, kg/h or lbs/h



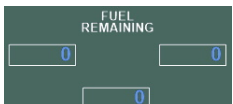
Fuel Pressure EFIS

Displays the fuel pressure of the configured engine in PSI



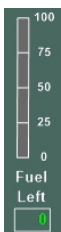
Fuel Qty EFIS

Displays the available fuel quantity (gal, liters, kg or pounds) for the configured tank



Fuel Remaining EFIS

Displays the remaining fuel for the configured tank(s)



Fuel Tank EFIS

Displays the available fuel for the configured tank

Panel Builder 3 - EFIS



Frame EFIS MFD

Frame for placing EFIS MFD Instruments



Frame EFIS ND (Navigation Display)

Displays a moving map



Frame EFIS PFD

Frame for placing EFIS PFD Instruments



Frame EFIS PFD (Wide width AI)

Frame for placing EFIS PFD Instruments (includes AI)

Line for EFIS

Draw a Horizontal ($X > Y$) or Vertical ($X < Y$) Line



Altitude Selected Label EFIS

Displays the Selected Altitude of the Autopilot



Glideslope EFIS

Displays the vertical deviation from Localizer



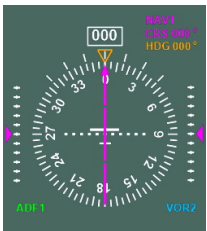
Heading Selected Label EFIS

Displays the Selected Heading of the Autopilot



Horizontal Situation Indicator EFIS

Displays the current heading with bug for autopilot and Course/Glideslope Information for VOR/GPS



Panel Builder 3 - EFIS

Localizer EFIS



Displays the horizontal deviation from Localizer

NDB Label EFIS



Displays NDB information for NDB1 or NDB2

Speed Selected Label EFIS



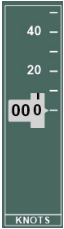
Displays the Selected Airspeed of the Autopilot

VOR Label EFIS



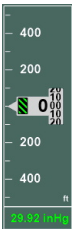
Displays VOR information for VOR1 or VOR2

Airspeed Indicator with speed ranges (configurable)



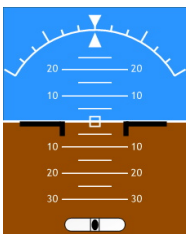
Displays airspeed of aircraft (indicated)

Altimeter for EFIS Displays



Displays aircraft altitude

Artificial Horizon



Displays attitude of aircraft

Flight Level Label EFIS



Displays the Flight Level of Aircraft

Ground Speed Label EFIS



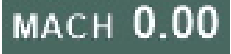
Displays the Ground Speed of Aircraft

Heading Indicator Magnetic



Displays the current heading with bug for autopilot

Mach Label EFIS



Displays the Mach of Aircraft

Radio Altitude Label EFIS



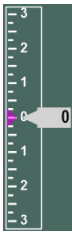
Displays the Radio Altitude and Decision Height

True Airspeed Label EFIS



Displays the True Airspeed of Aircraft

Vertical Speed Indicator EFIS



Displays the rate at which the aircraft climbs or descends in feet/minute