

**Cabin Temperature**



Displays the cabin temperature in Deg C or Deg F (only for A2A PA24)

---

**Clock PA24**



Displays Local Time in Clock Dial format.

---

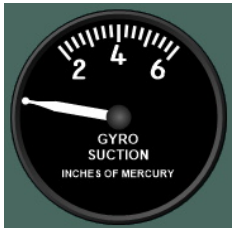
**Landing Gear Indicator**



Displays the status of the Landing Gear

---

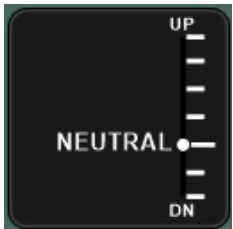
**Suction Gauge PA24**



Displays Vacuum for Instruments

---

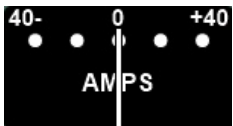
**Trim Indicator Elevator**



Shows the status of the Elevator Trim

---

**Ammeter PA24**



Displays the charge/discharge rate of the battery

---

**CHT PA24**



Displays the cylinder head temperature of the engine

---

**Exhaust Gas Temperature PA24**



Displays the exhaust gas temperature of the engine

---

**JPI 830 Engine Monitor for PA24**



Provides the JPI 830 Engine Monitor. Normal Mode ONLY! Only works with A2A PA24 Comanche for MSFS2020

## Panel Builder 3 - PA24



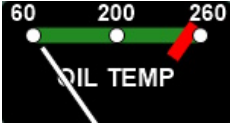
### MAP PA24 for Engine

Displays the Manifold Pressure for the Engine



### Oil Press PA24

Displays the oil pressure of the engine



### Oil Temp PA24

Displays the oil temperature of the engine



### RPM PA24 for the Engine

Displays the RPM for the Engine



### FFL PA24 for Engine

Displays the Fuel Flow for the Engine



### Fuel Pressure PA24

Displays the fuel pressure of the engine



### Fuel Tank Quantity of Aux Tank (Configurable)

Displays the fuel qty for the configured fuel tank



### Fuel Tank PA24 (Configurable Left/Right)

Displays the fuel qty for the configured fuel tank



### Automatic Direction Finder

Displays the direction to the tuned NDB (manual ADF Card)

## Panel Builder 3 - PA24

---



### Horizontal Situation Indicator

Displays the current heading with bug for autopilot and Course/Glideslope Information for VOR/GPS

---



### Navigation Display 1 PA24

Displays ILS/VOR course and glideslope deviation with OBS knob and To/From Flag

---



### Airspeed Indicator for P24 with speed ranges

Displays airspeed in knots

---



### S-TEC30 for PA24

In addition to the Autopilot Mode display, it displays the turn rate in deg/min and if the aircraft slips (is uncoordinated).

---



### Vertical Speed Indicator PA24

Displays the rate at which the aircraft climbs or descends in feet/minute

---