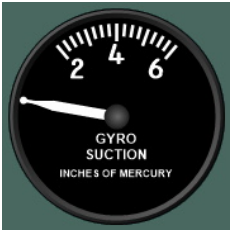




**Chronometer with Stop Watch**

Displays Local Time and provides a Stopwatch



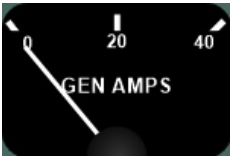
**Suction**

Displays Vacuum for Instruments



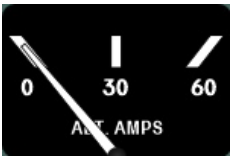
**Exhaust Gas Temperature**

Displays the exhaust gas temperature of the engine



**Generator Amps PA28**

Displays the amps of the generator



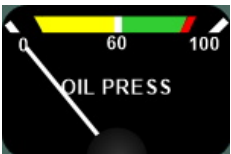
**Generator Amps PA38**

Displays the amps of the generator



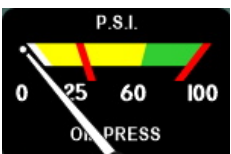
**Manifold Pressure and Fuel Flow Piper**

Displays the Manifold Pressure in inHg and the Fuel Flow in Gallons Per Hour for the Engine



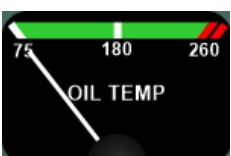
**Oil Pressure PA28**

Displays the Oil Pressure in PSI for the engine



**Oil Pressure PA38**

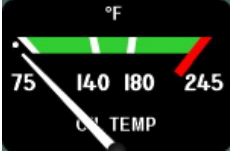
Displays the Oil Pressure in PSI for the engine



**Oil Temperature PA28**

Displays the Oil Temperature for the engine

**Oil Temperature PA38**



Displays the Oil Temperature for the engine

---

**RPM for the Engine**



Displays the RPM for the Engine

---

**Fuel Pressure PA28**



Displays the Fuel Pressure in psi for the Engine

---

**Fuel Pressure PA38**



Displays the Fuel Pressure in psi for the Engine

---

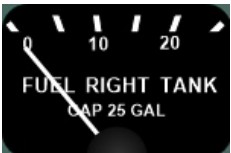
**Fuel Tank Left PA38**



Displays the fuel qty for the left fuel tank

---

**Fuel Tank PA28 (Configurable Left/Right)**



Displays the fuel qty for the configured fuel tank

---

**Fuel Tank Right PA38**



Displays the fuel qty for the right fuel tank

---

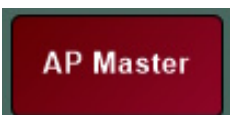
**Button Altitude Hold Mode**



Turns Autopilot Altitude Hold ON/OFF

---

**Turn Autopilot ON/OFF**



Button to turn Autopilot ON/OFF

---

**Engine Instrument Frame PA28**



Provides a frame for the square engine instruments (configurable)

---

**Engine Instrument Frame PA38**



Provides a frame for the square engine instruments (configurable)

---

**Frame Vertical for PA38**



Frame for Fuel Gauges PA38

---

**Automatic Direction Finder**



Displays the direction to the tuned NDB (manual ADF Card)

---

**Navigation Display 1**



Displays ILS/VOR course and glideslope deviation with OBS knob and To/From Flag

---

**Navigation Display 2**



Displays ILS/VOR course deviation with OBS knob and To/From Flag

---

**DAVTRON DVOR**



Displays Radials from/to VOR station

---

**Airspeed Indicator with speed ranges**



Displays airspeed in knots

---

**Altimeter with Barometric Pressure adjustment**



Displays altitude in feet



**Artificial Horizon**

Displays attitude of aircraft

---



**Heading Indicator Magnetic**

Displays the current heading with bug for autopilot

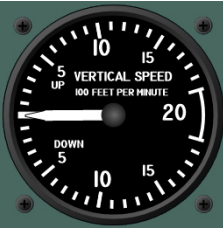
---



**S-TEC30 - Turn Rate and Slip Indicator w/Autopilot**

Displays the turn rate in deg/min and if the aircraft slips (is uncoordinated). It also provides an autopilot (SD not supported!)

---



**Vertical Speed Indicator**

Displays the rate at which the aircraft climbs or descends in feet/minute