

## Panel Builder 3 DCS - Spitfire Instruments



### Airsupply and Brake Pressure Spitfire

Displays the Airsupply, Left Brake and Right Brake Pressure



### Analog Clock Spitfire

Displays an Analog Clock



### Gear Position Indicator Spitfire

Displays Positon of Landing Gear



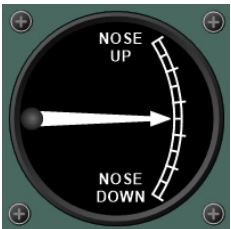
### Oxygen Pressure Spitfire

Displays the Oxygene Pressure



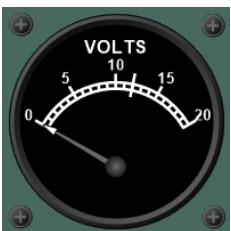
### Oxygen Tank Spitfire

Displays the level of the Oxygen Tank



### Trim Indicator Spitfire

Displays Positon of the Elevator Trim



### Voltage of Battery

Displays Voltage for Battery



### Boost Gauge Spitfire (alternate version)

Show boost pressure



### Boost Gauge Spitfire (alternate version)

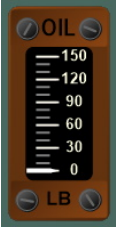
Show boost pressure

## Panel Builder 3 DCS - Spitfire Instruments



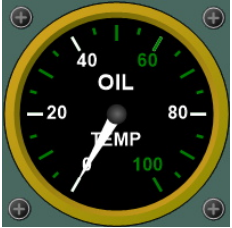
### Boost Gauge Spitfire

Show boost pressure



### Oil Pressure Spitfire

Displays the oil pressure



### Oil Temperature Spitfire

Displays the oil temperature in Deg C



### Radiator Temperature Spitfire

Displays the radiator temperature in Deg C



### RPM of Engine

Displays the RPM of the engine



### Fuel Spitfire

Displays current available fuel quantity in gallons



### Airspeed Indicator Spitfire Knots

Displays airspeed in miles per hour



### Altimeter with Barometric Pressure adjustment Spitfire

Displays altitude in feet



### Artificial Horizon Spitfire

Displays attitude of aircraft



**Directional Gyro Spitfire**

Displays aircraft heading



**Turn Rate and Slip Indicator Spitfire**

Displays the turn rate in deg/min and if the aircraft slips (is uncoordinated).



**Vertical Speed Indicator Spitfire**

Displays the rate at which the aircraft climbs or descends in feet/minute